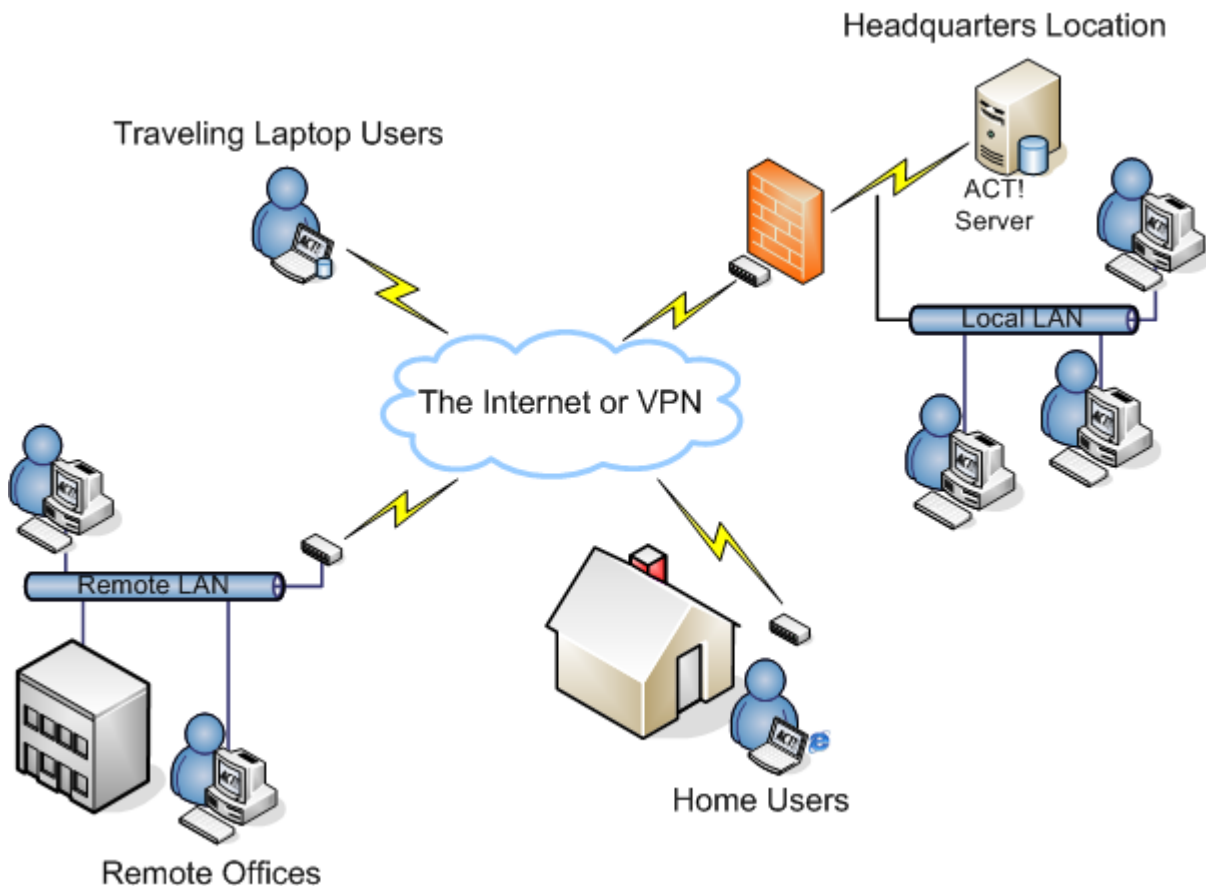


ACT! Architecture Overview



ACT! - Available from Any Location

The ACT! architecture was designed to be simple to set up, yet flexible and secure. ACT! is a client server application that you install and run yourself, or let us setup for you. If you have a computer running Windows XP, 2000 or 2003 Server, you are ready to install and use ACT!, there are no additional components you will need to buy for your server or clients. If you have only one location where you would like to use ACT! Premium 2007, it can run as a local application server on your local area network.

If your company has many locations, remote offices, home users or traveling laptop users, ACT! Premium for Workgroups allows you to set up a server in a central location and permit users to connect or synchronize from remote locations through the Internet or through VPN Connectivity.

If you need web based access think about ACT! Premium for Web, this allows you to host your customer and contact information via a web server that you setup.

ACT! offers easy import tools to bring data in from several different types of systems. Even collect and consolidate information from several different sources, and create a single, central view of all your customer information.

ACT! Premium for Workgroups or ACT! Premium for Web?

ACT! Premium for Workgroups is a Microsoft Windows based application. It permits individuals in your office or in remote locations to access customer and contact data with a local Windows based client application.

ACT! Premium for Web is a Microsoft Web Server application. It permits individuals in your office or in remote locations to access customer and contact data within Microsoft Internet Explorer Browser.

Maybe you want to deploy a mixed environment of both Windows and Web based access

ACT! Premium for Workgroups and ACT! Premium for Web come in two different tiers, EX and ST editions.

The ACT! EX editions includes a Microsoft SQL Server 2005 Express Edition installation with each server. The ACT! ST editions include a Microsoft SQL Server 2005 Standard® Edition installation with each server.

The actual number of users each edition can support will depend on your particular company's usage patterns, hardware platforms and workloads. You can upgrade at any time from the EX Edition to the ST Edition for \$100 per named user. Either edition contains the same full feature set, and are identical in functionality.

For more details on individual ACT! 2007 Premium components, or suggested architectures for different situations, please feel free to contact us.

Sage Software, the Sage Software logos, and the Sage Software product and service names mentioned herein are registered trademarks or trademarks of Sage Software, Inc., or its affiliated entities. All other trademarks are property of their respective owners.

For more information: NextCRM.net
602-281-4491